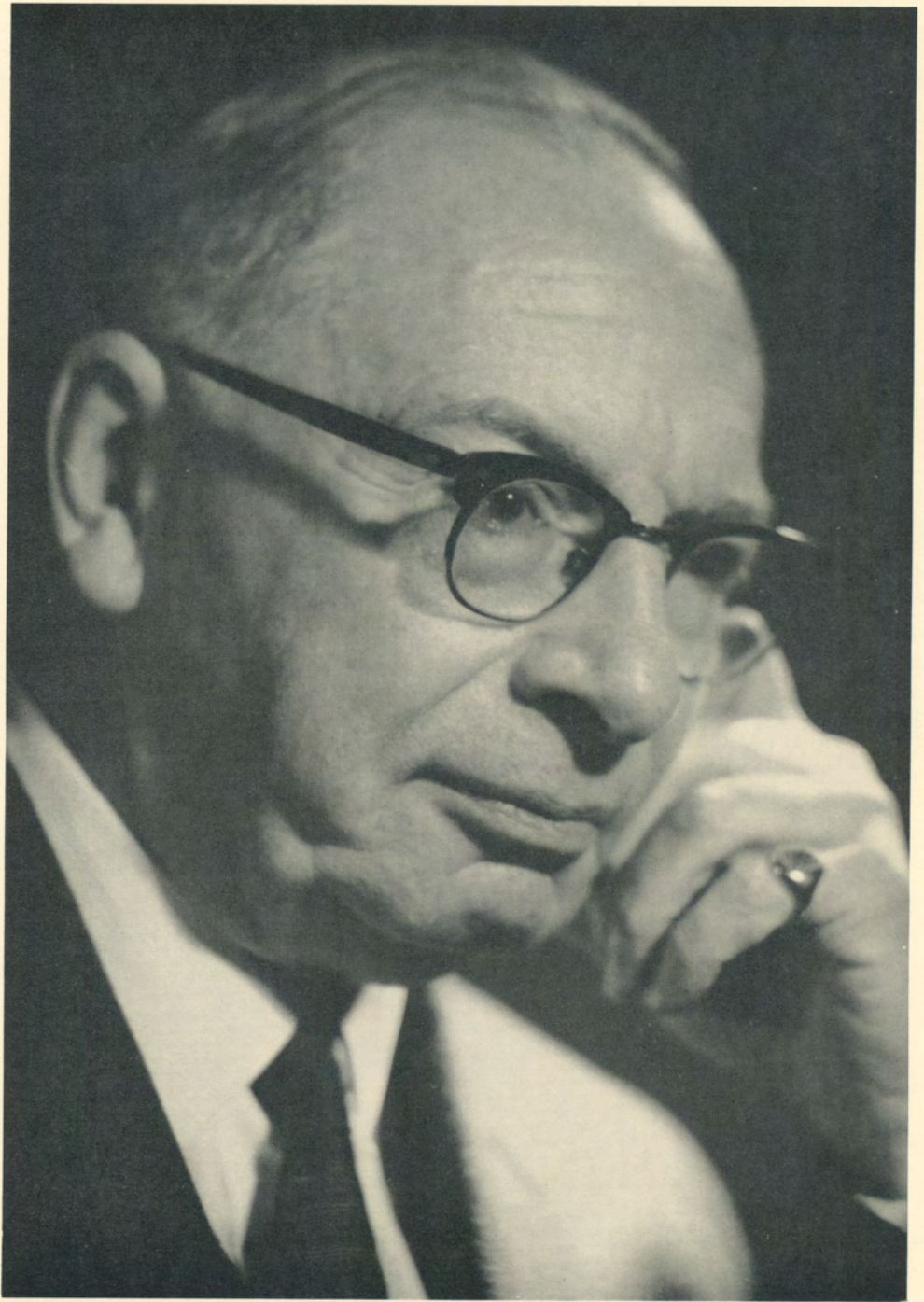


LAND, CHURCH, AND PEOPLE

*Essays presented to*

PROFESSOR H. P. R. FINBERG



BRITISH AGRICULTURAL HISTORY SOCIETY

LAND, CHURCH, AND  
PEOPLE

ESSAYS PRESENTED TO  
PROFESSOR H. P. R. FINBERG

*Edited by*

JOAN THIRSK

MUSEUM OF ENGLISH RURAL LIFE, WHITEKNIGHTS PARK  
READING, BERKS

1970

© British Agricultural History Society 1970  
*First published 1970*

PRINTED IN GREAT BRITAIN  
AT THE BROADWATER PRESS, WELWYN GARDEN CITY, HERTFORDSHIRE

## CONTENTS

Herbert Finberg: An Appreciation	<i>M. W. Beresford</i>	page vii
H. P. R. Finberg: A Bibliography	<i>Cyril Hart</i>	i
The <i>Codex Wintoniensis</i> and the King's <i>Haligdom</i>	<i>Cyril Hart</i>	7
The Social and Political Problems of the Early English Church	<i>Eric John</i>	39
The Economic Problems of the See of York: Decline and Recovery in the Sixteenth Century	<i>Claire Cross</i>	64
Economic and Social Change in the Forest of Arden, 1530-1649	<i>V. H. T. Skipp</i>	84
The Schooling of the Peasantry in Cambridgeshire, 1575-1700	<i>Margaret Spufford</i>	112
Seventeenth-Century Agriculture and Social Change	<i>Joan Thirsk</i>	148
Nonconformity in Country Parishes	<i>Alan Everitt</i>	178

